

M A M A
GREEN



YARD**ART**

995 Governor Dr. #103
El Dorado Hills, CA 95762

866 382-8600

info@yardart.com

Maintenance | Care | Warranty



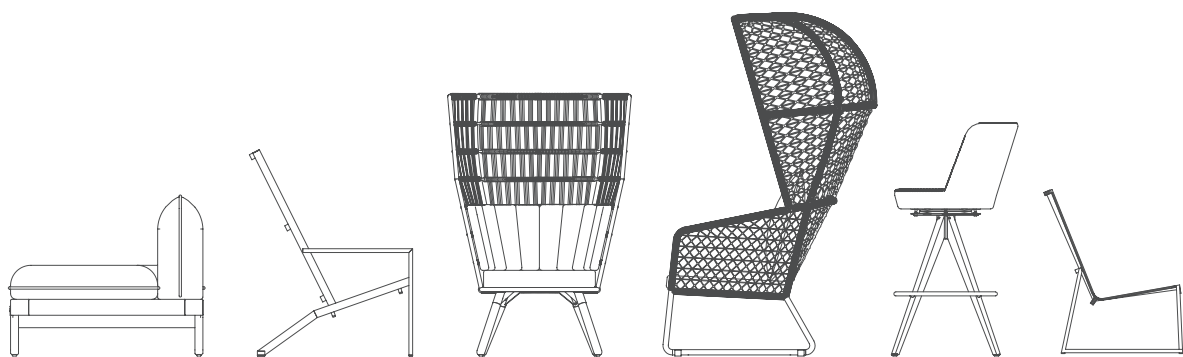
Welcome to the World of MAMAGREEN

Designed to last in any outdoor environment, MAMAGREEN furniture is manufactured using a majority of reclaimed or recyclable materials. More than 90% of the teak is carefully sourced from abandoned buildings, with the remainder coming from strictly managed plantations.

Selecting MAMAGREEN is making a conscious choice for style combined with durability.

MAMAGREEN furniture pieces are partially handmade and manufactured using natural materials. Small differences between furniture pieces, random minor imperfections, weight and dimension differences, and weathering of materials are part of its unique character.

Actual material colors and textures can be different from the digital display or printed media.



Important Instructions

- Read and keep these instructions
- Keep the original proof of purchase
- In case of questions, always mention the product code
- Follow maintenance and care instructions carefully for each material
- Use furniture only for its intended purpose
- Keep children safe from movable, heavy, sharp, or small parts, and during unpacking, assembly, or moving
- Unpack and assemble following the assembly instructions, using the correct tools, avoiding damage to the furniture and its surrounding and taking the necessary safety precautions
- Dispose the packaging in an environmentally friendly manner

HPL	02
TEAK	04
Tectona Grandis	04
Reclaimed Teak	06
Driftlook Teak	08
Premium Teak	10
Laminated Recycled Teak	12
Wear And Tear And Care Of Teak	15
METALS	16
Aluminum	16
304 Stainless Steel	18
Powder Coated 304 Stainless Steel	20
316 Stainless Steel	21
SYNTHETIC WICKER	22
TEXTILES	24
Batylite Sling	24
Batylite Lounge	26
Batylite Keops Straps	27
Sunbrella Cushions	30
Agora Cushions	36
Olefin Pads And Pillows	39
Leisuretex Upholstery	40
Textilene Mesh	41
Stamskin	42
ROPE	44
PROTECTIVE COVERS	46
WARRANTY	48



HPL (High Pressure Laminate)

HPL (High-Pressure Laminate) table tops and panels are specially developed for outdoor furniture and manufactured in Italy. Using highly-evolved technology, the production process involves pressing thermos-setting resins and kraft paper, into solid, compact, self-supporting panels.

Characteristics of HPL include its high impact, scratch, wear and tear resistance, light fastness, hygienic capacities, and low maintenance requirements.

HPL is subject to UV exposure and temperature changes, minor discoloration, expansion or bending may occur. Leaving an extension table in an open position, with the extension part in place and fixed, will reduce changes.

Do not leave extremely hot objects, such as pots or pans directly on HPL table tops.

Texture and color selection influences the amount of care and cleaning required: stains or scratches on solid white surfaces are much more visible than on stone motifs.

Cleaning of High Pressure Laminate

Spilled liquids	Clean immediately if possible
Most food rests, stains, and organic waste	Domestic detergent and water
Candle wax	Soften with a clothes iron and a towel
Most stubborn stains	Use a Mr. Clean Magic Eraser
Nail polish, linseed oil, markers, etc.	Remove with acetone and a cotton cloth
Synthetic oil paints, adhesive residues, etc.	Remove with 3M thinner

Note that certain stains and rests are very hard or impossible to be removed: silicone residues, cranberry juice, lime scale, some bleaches, etc. Using scrapers or sharp objects may damage the texture of the tabletop.

MAINTENANCE INSTRUCTIONS

MAMAGREEN uses Italian design high-pressure laminate (HPL) for selected furniture collections. HPL incorporates advanced technological manufacturing processes, involving extreme compression of resinated paper-based materials. The result is stunning, highly resistant design furniture with excellent longevity for outdoor living, requiring very little ongoing maintenance.

HANDLING

Do not apply undue pressure to the ends of the HPL tabletop, especially pre-assembly. Use two people to handle the table top securely, until assembly is completed. Once in use, always protect the table from hot serving dishes, and do not use it as a cutting board.

CARE

Simply wipe down with a soft, soapy cloth, then repeat without soap. Wipe away all water before leaving it in the shade to dry, where possible.

MAINTENANCE

We recommend washing the table top down with water and ordinary all-purpose household cleaner or dishwashing detergent, routinely 2-3 times per year. Even stubborn stains should lift with a higher concentration of detergent and water.

STORAGE

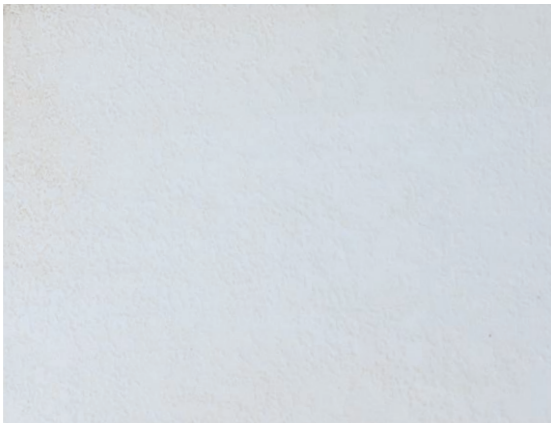
It is best to store furniture indoors or under cover if not in use for long periods, or during harsh winters.

NEVER

Do not use strong, toxic solvents to clean HPL, including alcohol-based. Never use abrasive cleaning aids (such as steel wool, or scouring powders).



Before Cleaning



After Cleaning

HPL DISCOLORATION

1 year before direct sunlight and UV exposure and being drenched by the rain



1 year after direct sunlight and UV exposure and being drenched by the rain





TEAK

TECTONA GRANDIS

Tectona Grandis, commonly known as “Teak” is a tropical hardwood tree, native to Southeast Asia.

The high tensile strength, the rich oil content and the close grains make mature teak highly pest, rot and termite resistant as well as very stable in exposed environments; the ideal wood for outdoor furniture.

Mamagreen manufactures its teak furniture A-Z in-house, strictly controlling each step. Carefully selecting every piece of wood, and allocating it towards a specific function, based on strength and look. Components are shaped using precise machinery and each piece is kiln dried to achieve the perfect moisture content before processing and gluing. Skilled craftspeople wire-brush or polish as part of the final process.





Weathered Teak



Before Cleaning

After Cleaning

RECLAIMED TEAK

Sourcing teak wood from abandoned buildings, and upcycling it into a sophisticated furniture design is an environmentally - friendly alternative to harvesting timber from forests or plantations.

Selecting furniture using recycled teak is not for customers who want a clean, solid, uniform look.

The unique character of reclaimed teak is proof of its colorful history. Beautiful imperfections are part of its charm, without compromising the overall performance of the furniture. Dents, scratches, nail rests, bolt marks, color and texture differences, hair cracks, and other imperfections make every piece of reclaimed teak, a truly unique piece.

Note that the weathering of reclaimed teak, as well as wear and tear, will further accentuate the unique character. Cracks may appear, color differences may occur, small parts of wood may become brittle and loose, and old metal parts may cause rust marks; all adding charm to the chic distressed silver-grey look of exposed reclaimed teak.

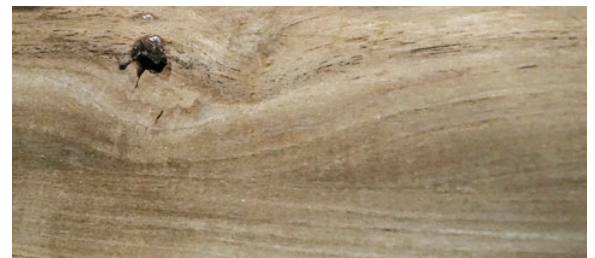
Most collections using reclaimed teak come with a wire-brushed textured surface, creating a rustic look. Note that this brushed texture may hide certain imperfections, but also form a trap for food rests and other organic materials that may cause mildew or mold. Regular cleaning with a brush is advised.

Several collections (including Zudu and Zupy) come with a smooth sanded surface, accentuating color differences and texture imperfections. Regular wiping with a soft brush and soapy water is advised.



BRUSHED

Utilized by MAMAGREEN since 2007, the brushing process highlights the full potential and unique look of used wood (including nail holes, cuts, and natural defects). The result is distinctively robust and 'all-weather'.



SMOOTH SANDED

The smooth finish creates the feel of indoor furniture, for outdoors. Striking color differences and construction marks mean each piece has an individual character.



MAINTENANCE INSTRUCTIONS

Teak wood has long been considered the best choice for outdoor furniture, due to its high natural oil content. Teak is a hardwood, and aged teak is even denser. MAMAGREEN eco-designs specialize in recycling teak. Sourcing carefully from abandoned buildings, only the most optimal pieces are selected and reshaped, ultimately becoming an essential part of a sophisticated furniture design. All MAMAGREEN teak furniture is treated with Golden Care 'Teak Shield' for the USA, and untreated for the rest of the world.

HANDLING

Reclaimed teak is extremely robust, with a tendency not to splinter, so no special handling is necessary. However, we recommend not leaving anything with moisture, like a pot plant, on top of the table for extended periods, as it may mark.

CARE

Simply sponge-wash (or brush down gently with a soft nylon bristle brush) regularly with mild household soap and lukewarm water, and repeat without soap. Wipe away all excess water with a lint-free cloth, and allow it to dry naturally. Follow the same procedure for any spills.

MAINTENANCE

Teak is a natural, and therefore ever-changing, material. Minor hair cracks may possibly appear over time, but are neither unsightly nor impact the integrity of the product. All teak furniture will turn beautifully silver-grey if frequently exposed to direct sunlight. For both maintaining the original color, and adding a more protective layer, we recommend treating MAMAGREEN furniture twice a year with a teak shield (Golden Care™ or similar), or as often as needed. Wash and dry the teak as per the care instructions above before applying.

STORAGE

It is best to store furniture indoors or under cover if not in use for long periods, or during harsh weather conditions. Teak is fully water resistant, but minimizing exposure to direct sunlight will slow down the changes in wood color, and reduce the need to re-seal. We do not recommend covering. If you choose to cover, make sure the furniture is completely dry beforehand. Elevate the cover from the table surface (any clean, non-scratchy item can be used as a 'block'), and remember to air regularly to avoid mold.

NEVER

Do not use abrasive chemicals, cleaning agents, stains, or varnishes other than recommended.

Do not use metal brushes or steel wool for washing.

Do not cover the table if it is not dry.

Do not lay any covers directly on the table for any extended periods. Do not leave it in storage without airing regularly.

DRIFTLOOK TEAK

MAMAGREEN has introduced a new teak finish for the AIKO collection. We call it 'drift-look teak', implementing a new approach to reclaiming teak. Rather than simply recycling, natural and historic value is acknowledged; the full potential is realized through an upcycling process that highlights the teak's distress marks. Every piece of 'drift-look' design furniture is therefore completely individual, with marks that tell their own story; just like driftwood found washed up on the beach, and perfect for outdoor living.

Drift-look teak is delivered finished, either as 'original' or in rich 'espresso', and sealed with a teak shield. To preserve the finish, avoid contact with any solvents or chemicals, and follow care and maintenance instructions as below.

Drift-look teak is best washed down regularly by spraying with plain water and wiping with a microfiber (or any lint-free) cloth. Then simply leave to dry naturally. Follow the same procedure immediately for any spills, to avoid spotting. Teak is a natural, and therefore, ever-changing material. It can be left outside, season after season, with little to no care. Exposed to the elements, and regardless of the finish, it will slowly turn into a beautiful silver grey.

Drift-look teak highlights various marks and individual imperfections in the wood, which will always be a key feature of your AIKO lounge or dining set. However, the 'original' or 'espresso' finish will invariably fade over time. If you would like to maintain the original finish, re-stain periodically, twice a year, or as required. We recommend 'Golden Care' products as follows or equivalent.

- I. Drift-look teak: original finish
re-stain with 'Golden Care Instant Grey'
- II. Drift-look teak: espresso finish
re-stain with 'Golden Care Wenge'

Then add a top coat of 'Golden Care Teak Shield' teak seal or equivalent. It is best to store furniture indoors or under cover if not in use for long periods, or during harsh winters. Minimizing exposure to the elements will slow down the changes in the wood color, and prolong the need to re-stain and seal.

Do not re-stain without re-sealing. The stain may not be immediately colorfast, plus the seal will protect the finish and extend its lifetime.

Do not use abrasive chemicals, cleaning agents, stains, or varnishes other than those provided or recommended.

Do not use hard brushes for washing.

Do not use steel wool for preparing wood for re-finishing. Only use a soft 'Scotch-Brite' type of pad or a soft nylon brush.



F36
ORIGINAL
FINISH

Drift-look teak: original finish
re-stain with 'Golden Care Instant Grey'



F37
ESPRESSO
FINISH

Drift-look teak: espresso finish
re-stain with 'Golden Care Wenge'





PREMIUM TEAK

For furniture lovers who want an alternative to the unique character of reclaimed teak, but still prefer the warmth, without the texture and look of an upcycled material, we offer a number of collections using plantation teak.

Mamagreen uses no forest-origin teak, but only teak sourced from sustainable teak plantations, that abide by strictly controlled environment and certified criteria that include replanting trees after harvest.

We select individual full-grown trees, and manage the entire production process carefully, from log to finished product.

MAINTENANCE INSTRUCTIONS

Teak wood is endemic to southeast Asia. With a high natural oil and rubber content, it is widely considered the best choice for outdoor furniture built to last a lifetime .

Once over-used, the deforestation of teak is now strictly controlled to ensure a continued and rejuvenated supply of teak wood for generations to come. MAMAGREEN uses new teak as and when required, from sustainably verified and certified plantations. We select individual trees, and manage the entire production process carefully, from log to finished product. Even offcuts are carefully shaped collected and used as part of our commitment to sustainability. All MAMAGREEN teak furniture is treated with Golden Care 'Teak Shield' for the USA, and untreated for the rest of the world.

HANDLING

Teak wood is extremely hardy, with a tendency not to splinter, so no special handling is necessary. However, we recommend not leaving anything with moisture, like a pot plant, on top of the table for extended periods, as it may mark.

CARE

Simply sponge-wash (or brush down gently with a soft nylon bristle brush) regularly with mild household soap and lukewarm water, and repeat without soap. Wipe away all excess water with a lint-free cloth, and allow to dry naturally. Follow the same procedure for any spills.

MAINTENANCE

Teak is a natural, and therefore ever-changing, material. Minor hair racks may possibly appear over time, but are neither unsightly nor impact the integrity of the product. All teak furniture will turn beautifully silver-grey if frequently exposed to direct sunlight. For both maintaining the original color, and adding a more protective layer, we recommend treating MAMAGREEN furniture twice a year with a teak shield (Golden Care or similar), or as often as needed. Wash and dry the teak as per the care instructions above, before applying.

STORAGE

It is best to store furniture indoors or under cover if not in use for long periods, or during harsh weather conditions. Teak is fully water resistant, but minimizing exposure to direct sunlight will slow down the changes in wood color, and reduce the need to re-seal. We do not recommend covering. If you choose to cover, make sure the furniture is completely dry beforehand. Elevate the cover from the table surface (any clean, non-scratchy item can be used as a 'block'), and remember to air regularly to avoid mold.

NEVER

Do not use abrasive chemicals, cleaning agents, stains, or varnishes other than recommended.

Do not use metal brushes or steel wool for washing.

Do not cover the table if it is not dry. Do not lay any covers directly on the table for any extended periods.

Do not leave it in storage without airing regularly.

LAMINATED RECYCLED TEAK

Upcycling any remaining pieces of wood from production processes is a very important part of MAMAGREEN's commitment to sustainability.

Small pieces of high-grade, custom-shaped teak are matched according to grain, then finger-jointed meticulously. The new tabletop surface is sealed by applying lamination with strong and steady pressure. The result is perfectly finished, distinctive, and highly robust.



MAINTENANCE INSTRUCTIONS

Teak wood is the best choice for outdoor furniture, due to its' high natural oil content. Upcycling any remaining pieces of wood from production processes is a very important part of MAMAGREEN's commitment to sustainability.

Small pieces of high-grade, custom-shaped teak are matched according to grain, then finger jointed meticulously. The new tabletop surface is sealed by applying lamination with a strong and steady pressure. The result is a perfectly finished, designed teak table top that is interesting, distinctive, and highly robust.

All MAMAGREEN teak furniture is treated with Golden Care' Teak Shield', for the USA, and untreated for the rest of the world.

HANDLING

Laminated teak table tops are very strong, and will not splinter. No special handling is necessary. However, we recommend not leaving anything with moisture, like a pot plant, on top of the table for extended periods of time, as it may eventually cause marks.

CARE

Simply sponge-wash (or brush down gently with a soft nylon bristle brush) regularly with mild household soap and lukewarm water, and repeat without soap. Wipe away all excess water with a lint-free cloth, and allow it to dry naturally. Follow the same procedure for any spills.

MAINTENANCE

Teak is a natural, and therefore ever-changing, material. Minor hair racks may possibly appear over time, but are neither unsightly nor impact the integrity of the product. All teak furniture will turn beautifully silver-grey if frequently exposed to direct sunlight. For both maintaining the original color, and adding a more protective layer, we recommend treating MAMAGREEN furniture twice a year with a teak shield (Golden Care or similar), or as often as needed. Wash and dry the teak as per the care instructions above, before applying.

STORAGE

It is best to store furniture indoors or under cover if not in use for long periods, or during harsh weather conditions. Teak is fully water resistant, but minimizing exposure to direct sunlight will slow down the changes in wood color, and reduce the need to re-seal.

We do not recommend covering. If you choose to cover, make sure the furniture is completely dry beforehand. Elevate the cover from the table surface (any clean, non-scratchy item can be used as a 'block'), and remember to air regularly to avoid mold.

NEVER

Do not use abrasive chemicals, cleaning agents, stains, or varnishes other than recommended. Do not use metal brushes or steel wool for washing.

Do not cover the table if it is not dry. Do not lay any covers directly on the table for any extended periods. Do not leave it in storage without airing regularly.



WEAR AND TEAR AND CARE OF TEAK

After unpacking teak furniture, it is advised to rinse, wipe with a wet cloth or let it sit in the rain before first-time use to avoid stains on clothing from microscopic wood dust. Exposed to sunlight and left to age naturally, teak patinas will gradually alter to a Beautifully soft silver-grey, and remain stable for many years.

Depending on the environment and use, teak furniture may be subject to texture or color differences, stains, black spots, superficial mold or mildew, minor warping or cupping, or cracks and hairline cracks that do not impact the integrity of the product.

Covering without sufficient air circulation, covering humid or dirty surfaces, may cause organic waste to rot. When furniture is used under trees, note that leaves and bird droppings may start to rot and cause mold. It is recommended not to leave anything on top of the table for an extended period, as it may mark, especially items with moisture like a pot plant. Marks from acid rain may occur and form grey spots Wood sap may occur in rare cases; note that wood is and remains a living material, and sealing with wood oil or a teak sealer will normally help, in stubborn cases, a replacement part may be required. Reclaimed teak, coming from old constructions, may contain small metal rests from nails or bolts that may cause black or red marks.

We deliver our furniture sanded, polished and sealed, and we advise you to allow the furniture to weather naturally. The great thing about teak is that you do not need to apply any finishing to keep the performance of the furniture. To maintain a good look, clean the furniture regularly, brush with a stiff brush, domestic liquid soap, and lukewarm water, and rinse thoroughly. Most stains can be removed by lightly sanding the furniture.

There are various reliable products on the market that aim to preserve the original look, coating, staining the wood, or slowing the greying process. Check with your dealer, and follow instructions carefully. We do not advise cleaning teak furniture with oil, as oil may react and turn the furniture black with mildew. Sanding thoroughly will bring the original color back and will be required, in case one chooses to apply a finish to the wood. Note that any finishing, stain, protector, shield, oil, or coating will need regular re-applying.

METAL

ALUMINUM

Made from the alloy 6063, aluminum frames are electrostatically powder coated, and baked in an oven at a very high temperature, forming a solid surface with high UV-resistant capacities.

Various colors and textures are available and have slightly different specifications (see our color charts for details).

Ultra-Durable colors offer higher protection in a chlorine or marine environment, and better UV and scratch resistance, which are the preferred choices for contract use.

To clean, wipe down with a soft brush, or soapy cloth, then repeat without soap. In general, smooth surfaces are easier to clean than textured (sand) surfaces. Stains can be removed by using a Mr. Clean Magic Eraser sponge. In all cases, avoid acidic, alcohol, or solvent-based cleaners, especially abrasive pads, sandpaper, or metal brushes.

Aluminum frames are subject to abrasive wear which causes damage to the powder-coated surface, especially in sandy or rocky areas, moving or use, or upon contact with hard, sharp, or abrasive objects. Peeling or bubbling may occur after some time, especially in salty or chlorine environments, without damaging the structural integrity of the frame.

Frost damage may occur, in case there's a buildup of water inside the frame, important to allow circulation and not to close any holes at the bottom of the legs or the frame.

Touch-up paint is available to repair scratches or peeling.



Before Cleaning



After Cleaning

MAINTENANCE INSTRUCTIONS

MAMAGREEN design aluminum furniture uses the smooth, strong alloy 6063, 100% weatherproof, and requires very minimal maintenance. Electrostatically applied, colored powder coating provides additional UV protection, in attractive colors.

CARE

To clean, simply wipe down with a soft, soapy cloth, then repeat without soap (avoid acidic, alcohol or solvent based cleaners, and abrasive pads or brushes).

HANDLING

Take care when moving. While stainless steel is famous for its' strength and longevity, rough handling may still cause dents and scratches.

MAINTENANCE

Our powder coating is completed in-house and is a high quality, durable finish. Visible scratches should only occur from very rough handling or contact with sharp objects. If so, they can be easily corrected with the touch-up kit supplied at the time of delivery.

NEVER

Do not scrub with harsh cleaning products or abrasive cleaning aids.



STAINLESS STEEL

304 STAINLESS STEEL

304 Stainless steel frames are sturdy and suitable for most non-marine environments.

Susceptible to 'tea staining' (a build-up of particles on the surface of the metal which oxidize or corrode), 304 stainless steel is not recommended for use near saltwater swimming pools or within close proximity to the sea.

The hairline-brushed satin polish, limits the visibility of stains and dirt. Regular cleaning will extend the longevity of the frame and the look of the furniture.

Clean with a soft brush and a cloth with '3M Stainless Cleaner & Polish' or another household stainless steel cleaner, avoid acidic, alcohol, or solvent-based cleaners, and abrasive pads or brushes. To avoid watermarks, wipe away all water thoroughly before leaving it in the shade to dry.

We recommend polishing, with '3M Stainless Steel Cleaner & Polish' or another household stainless steel polish every 6 months, or if any discoloration occurs. This will help prevent and/or remove most 'tea staining'.

Frost damage may occur, in case there's a buildup of water inside the frame, important to allow circulation and not to close any holes at the bottom of the legs or the frame.

Note that 'tea staining' does not harm the integrity of the metal, can be cleaned, and is considered normal wear and tear.



Before Cleaning



After Cleaning



1



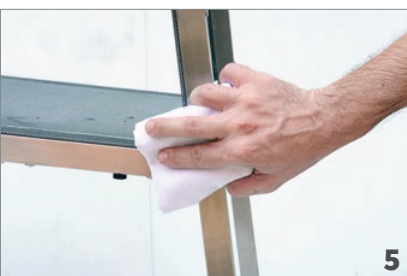
2



3



4



5



6

MAINTENANCE INSTRUCTIONS

MAMAGREEN design 304 stainless steel grade frames have excellent corrosion resistance. They are available as original ‘hairline brushed’, or electrostatically powder coated in our updated selection of attractive, modern colors (reference separate maintenance instructions, titled ‘Powder coated stainless steel’). For extra-salty marine environments, such as cruise ships or beachfront properties, 316 stainless steel grade is also available upon request.

HANDLING

Take care when moving. While stainless steel is famous for its’ strength and longevity, rough handling may still cause dents.

CARE

Simply wipe down with a soft soapy cloth, then repeat without soap (avoid acidic, alcohol, or solvent-based cleaners, and abrasive pads or brushes). This will keep these stainless steel frames clean and shiny. To avoid watermarks, wipe away all water thoroughly before leaving it in the shade to dry.

MAINTENANCE

We recommend polishing, with any household stainless steel polish every 6 months, or if any discoloration occurs. This will help prevent and/or remove any ‘tea staining’ (a build-up of particles on the surface of the metal which oxidize or corrode) . Note that ‘tea staining’ does not harm the integrity of the metal but is aesthetically displeasing. Store furniture indoors or under cover if not in use for long periods of time, or during harsh winters.

STORAGE

While it is always better to store furniture if not in use, stainless steel has no special storage requirements.

NEVER

Do not scrub stainless steel with harsh cleaning products or abrasive cleaning aids. Avoid exposure to salty, marine environments.

POWDER COATED 304 STAINLESS STEEL

Powder-coated 304 stainless steel frames are sturdy and suitable for most environments. Electrostatically powder coated, on top of a protecting primer, and baked in an oven at a very high temperature, frames have a solid surface with high UV resistance and all-weather capacities.

Ultra-Durable colors offer higher protection in a chlorine or marine environment, and better UV and scratch resistance, which are the preferred choices for contract use.

To clean, wipe down with a soft brush, or soapy cloth, then repeat without soap. In general, smooth surfaces are easier to clean than textured (sand) surfaces. Stains can be removed by using a Mr. Clean Magic Eraser sponge. In all cases, avoid acidic, alcohol, or solvent-based cleaners, especially abrasive pads, sandpaper, or metal brushes.

Powder-coated frames are subject to abrasive wear, that causes damage to the surface, especially in sandy or rocky areas, moving or use, or upon contact with hard, sharp, or abrasive objects. Peeling or bubbling may occur after some time, especially in salty or chlorine environments, without damaging the structural integrity of the frame.

Frost damage may occur, in case there's a buildup of water inside the frame, important to allow circulation and not to close any holes at the bottom of the legs or the frame.

Touch-up paint is available to repair scratches or peeling.

MAINTENANCE INSTRUCTIONS

MAMAGREEN design 304 stainless steel grade frames have excellent corrosion resistance. They are available as original 'hairline brushed' (reference separate maintenance instructions, titled 'Stainless steel'), or electrostatically powder coated in our updated selection of attractive, modern colors. For extra-salty marine environments, such as cruise ships or beachfront properties, 316 stainless steel grade is also available upon request, and can also be powder coated if desired.

HANDLING

Take care when moving. While stainless steel is famous for its strength and longevity, rough handling may still cause dents, scratches, or the coating to lift

CARE

To clean, simply wipe down with a soft or soapy cloth, then repeat without soap (avoid acidic, alcohol, or solvent-based cleaners, and abrasive pads or brushes).

MAINTENANCE

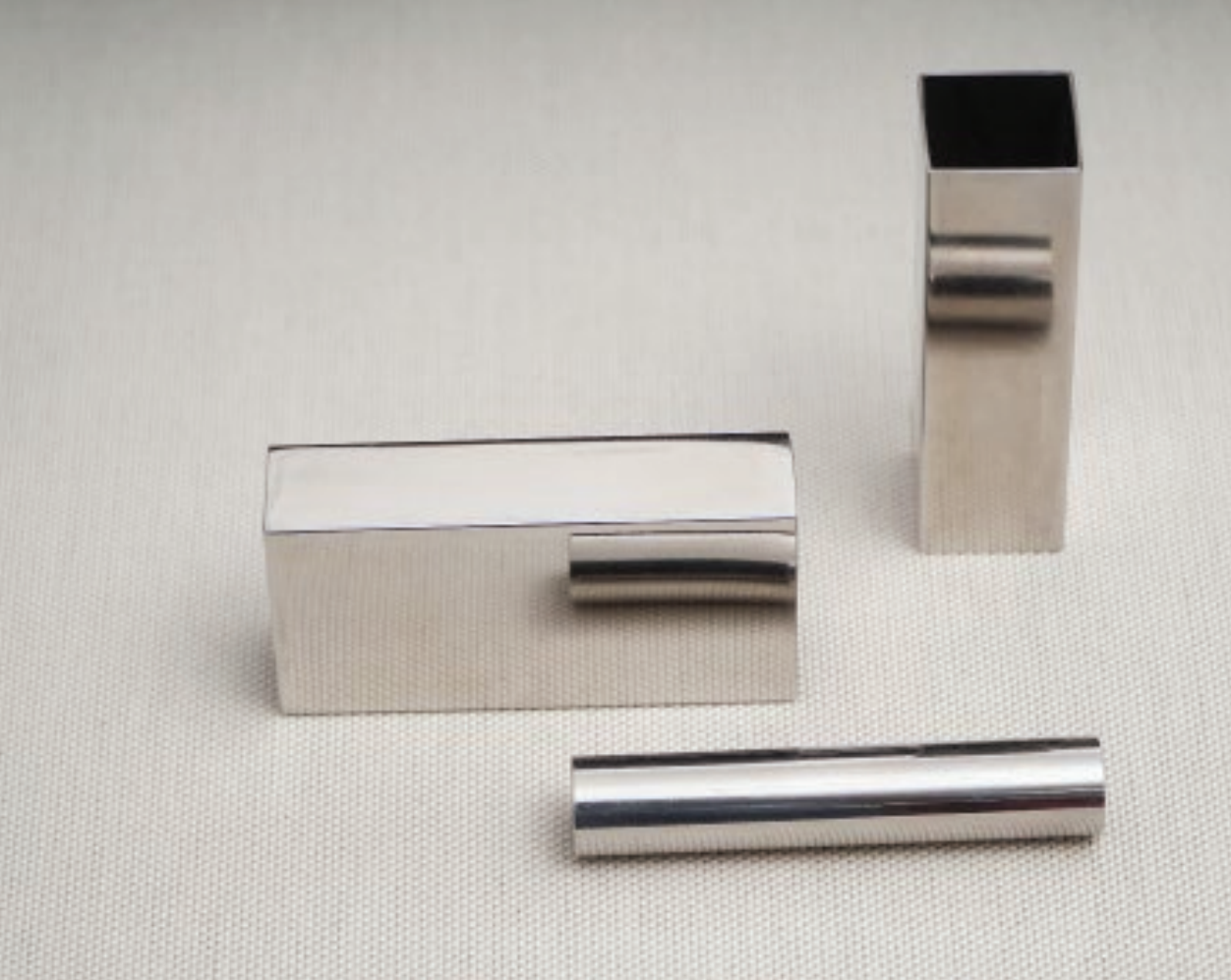
Our powder coating is completed in-house and is a high quality, durable finish. Visible scratches should only occur from very rough handling or contact with sharp objects. If so, they can be easily corrected with the touch-up kit supplied at the time of delivery.

STORAGE

While it is always better to store furniture if not in use, stainless steel has no special storage requirements.

NEVER

Do not scrub with harsh cleaning products or abrasive cleaning aids. Avoid exposure to salty, marine environments.



316 STAINLESS STEEL

316 Stainless steel frames have a mirror polish shiny look and excellent corrosion resistance, suitable for most marine environments. Making this the preferred choice for cruise ships and seafront properties.

Clean with a soft brush and a cloth with '3M Stainless Cleaner & Polish' or another household stainless steel cleaner, avoid acidic, alcohol, or solvent-based cleaners, and abrasive pads or brushes. To avoid watermarks, wipe away all water thoroughly before leaving it in the shade to dry.

We recommend polishing, with '3M Stainless Steel Cleaner & Polish' or another household stainless steel polish every 6 months, or if any discoloration occurs. This will help prevent and/or remove most 'tea staining'.

Frost damage may occur, in case there's a buildup of water inside the frame, important to allow circulation and not to close any holes at the bottom of the legs or the frame.

Note that 'tea staining' does not harm the integrity of the metal, can be cleaned, and is considered normal wear and tear.

SYNTHETIC WICKER

Made in Indonesia by Rehau

Application: outdoor weaving material

Weather-resistant HDPE wicker is an excellent choice for outdoor furniture. Colorfast, UV resistant, low maintenance, recyclable, and with high tensile strength capacities

For cleaning: use a soft brush, a cloth and mild detergent



MAINTENANCE INSTRUCTIONS

MAMAGREEN all-weather, design wicker is perfect for long-term outdoor use. Made of smooth-sided, solution-dyed polyethylene, it will maintain integrity regardless of extreme temperatures and inclement weather conditions. UV resistance, elasticity, and therefore optimal sitting comfort is guaranteed.

CARE

Vacuuming will remove the majority of ordinary debris that may be lodged in the weave. For a thorough clean, then wash using a soft synthetic-bristled brush and mild household soap, and lukewarm water. Rinse well, ensuring no soap residue or remaining superficial dirt, and dry in the shade (if possible). You may also use a high-pressure cleaner (set to medium) rather than handwashing.

MAINTENANCE

The best way to maintain your wicker furniture is with regular basic cleaning, preventing a build-up of unwanted materials in the weave.

STORAGE

It is best to store furniture indoors or under cover if not in use for long periods of time, or during harsh winters.

NEVER

Do not use acidic, alcohol-based, or solvent-based cleaners. We recommend using any ordinary household soap, or diluted dishwashing detergent. Do not use steel bristle brushes or highly abrasive cleaning aids.

MAMAGREEN's wicker is made from high-density polyethylene and is extremely weather resistant, suitable both in tropical and cold environments. Carefully handwoven, wicker furniture pieces are durable, non-toxic, recyclable, and easy to clean with liquid soap.



Before Cleaning



After Cleaning



TEXTILES

MAMAGREEN offers textiles from the industry leaders in outdoor textile technology, selected for their specific capacities and specific functions.

BATYLINE SLING

Made in France by Serge Ferrari

Application: durable outdoor mesh

Premium grade meshes textile, with extreme tear and tensile strength. Furniture using Batyline sling will give seating pleasure for many years, in any environment.

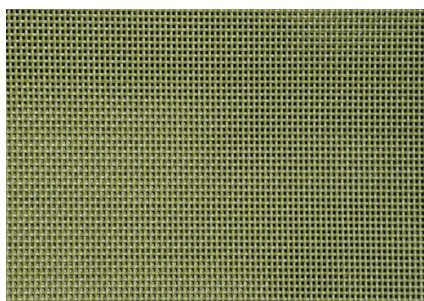
Tip: replacing a sling should only be done by an experienced qualified person

For cleaning:

www.youtube.com/watch?v=jcfXO5QI9Jo&feature=youtu.be



Before Cleaning



After Cleaning



MAINTENANCE INSTRUCTIONS

MMAMAGREEN slings are either Batyline or Twitchell, both international industry leaders in outdoor textile technology. Their slings are extremely durable and developed to withstand prolonged exposure to the elements, including marine environments. Strong, coated polyester also means these fabrics have outstanding 'bounce back' qualities that will not be adversely affected by repeated (normal) use.

HANDLING

Our slings are flame, stretch, and tear-resistant. However, care should be taken to avoid direct contact with sharp objects. Stack chairs carefully, making sure not to pierce the sling. Overloading the sling surface will eventually impact the durability of the textile.

CARE

If cleaning is required, do not remove it from frames. Just wash directly, with mild household soap and lukewarm water, allowing the soapy water to seep in. Then clean gently with a soft synthetic brush. Rinse; this textile is quick drying and will be ready to use again in a few minutes.

MAINTENANCE

These high-tenacity polyester yarns require no specific maintenance. Re-defining 'easy care', brushing off the dirt, then hosing down monthly should ensure they only require washing occasionally.

STORAGE

While not essential, it is always best to store furniture indoors or under cover if not in use for long periods of time, or if weather or environmental conditions are unusually harsh.

NEVER

Do not use acidic, alcohol-based, or solvent-based cleaners. We recommend using any ordinary household soap, or diluted dishwashing detergent. Do not use steel bristle brushes or highly abrasive cleaning aids.



BATYLINE LOUNGE

Made in France by Serge Ferrari Application: outdoor upholstery

Batyline Lounge is a very closely woven all-weather mesh with excellent UV resistance, extreme tear strength, and flame-retardant specifications.

Tip: white upholstered furniture requires regular cleaning

For cleaning:

www.youtube.com/watch?v=jcfXO5QI9Jo&feature=youtu.be



BATYLINE KEOPS STRAPS

Made in France by Serge Ferrari

Application: outdoor upholstery

Batyline Keops is a range of straps containing hemp fibers for a natural, matt finish.
Specifications: very high tensile strength, extreme light stability and mold resistance.

For cleaning:

www.youtube.com/watch?v=jcfXO5QI9Jo&feature=youtu.be

MAINTENANCE INSTRUCTIONS

BATYLINE® KEOPS® is a high-tenacity, thermo-fixed composite webbing. It has a soft, natural feel with excellent 'bounce back' properties and seating comfort. Using Canatex (hemp blended with polyester) it is 100% recyclable and recycled, yet can withstand prolonged exposure to the elements.

HANDLING

KEOPS® is flame, stretch, and tear-resistant. However, care should be taken to avoid direct contact with sharp objects or open flames. Overloading will eventually impact the durability of the textile.

CARE

If cleaning is required, do not remove it from the frame. Just wash with a mild household soap and lukewarm water, using a soft synthetic brush. Rinse; this textile is quick drying and will be ready to use again in a few minutes.

MAINTENANCE

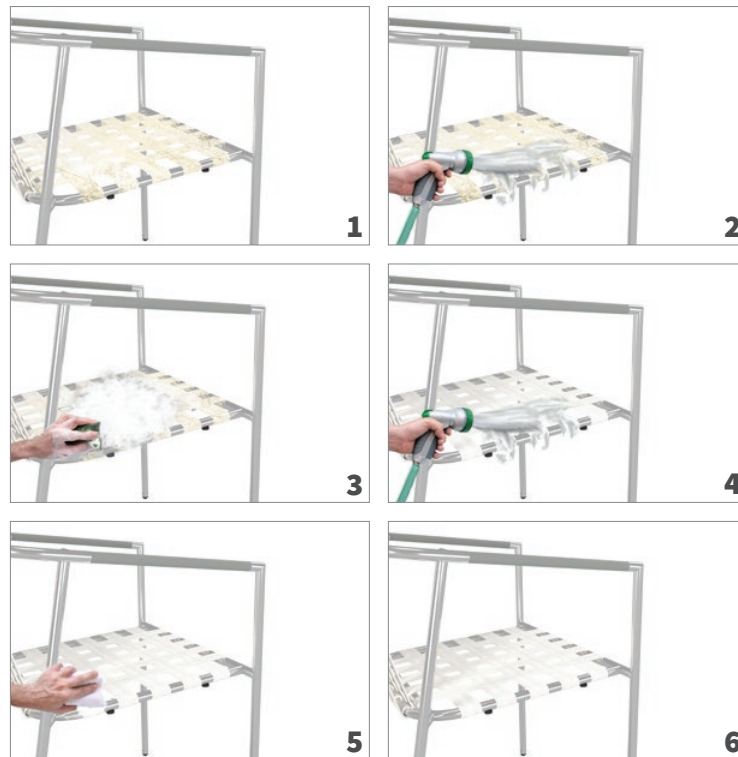
These high-tenacity polyester yarns require no specific maintenance. Re-defining 'easy care', brushing off the dirt, then hosing down regularly should ensure washing is only required occasionally.

STORAGE

While not essential, It is always best to store furniture indoors or under cover if not in use for long periods of time, or if weather or environmental conditions are unusually harsh.

NEVER

Do not use acidic, alcohol-based, or solvent-based cleaners. We recommend using any ordinary household soap, or diluted dishwashing detergent. Do not use steel bristle brushes or highly abrasive cleaning aids.







Sunbrella® Cushion

Sunbrella® Cushion with piping

AIKO Style Cushion

Water resistant barrier covers the QuickDryFoam® core. Ventilation holes increase seating comfort and drying speed.

SUNBRELLA® CUSHIONS

Made in the USA by Glen Raven

Application: performance outdoor fabric for cushions, all lounge collections except Aiko

100% solution-dyed acrylic with a soft flexible feel, 260 gr/m², UV resistant, anti-stain treatment, and water repellent. Sunbrella sailcloth textiles and some of the special ranges have an indoor feel, being heavier (400/580 gr/m²), are very sturdy but will require a longer drying time.

Cushions with a Sunbrella cover will dry fast and remain in color and shape, also when used intensively. The core is made of a specially for outdoor use developed memory foam, with a fast-drying open cell structure.

Tip: enjoy your lounge furniture instantly after a rain shower using protective covers, but remember to never cover wet cushions with a rain cover, especially for an extended period of time

For cleaning:

www.sunbrella.com/en-us/how-to-clean



MAINTENANCE INSTRUCTIONS

Sunbrella® is a well-known world leader in performance outdoor fabrics. Combined with QuickDryFoam cores, MAMAGREEN Sunbrella® cushions and pillows are top quality; they hold their vibrant color even with constant exposure to the sun, salt, and chlorine of harsh outdoor environments and are water repellent, and mold and mildew resistant.

CARE

Easy to clean, simply wash covers after removing cushions or pillow cores. Brush off dirt, then spray with warm, soapy water, until the fabric is soaked through, and handwash. You may use a household stain remover, as necessary. For stubborn stains, brush both sides gently with a soft, synthetic brush, across the cover from seam to seam (rather than with a circular motion). Rinse and allow to dry naturally. For normal spills, blot (rather than rub), then clean as above. For any outstanding issues, reference the detailed 'how to clean' details on the Sunbrella® website.

MAINTENANCE

Subrella textiles are legendary, engineered to combine the highest level of both design and performance. For extra long-term durability, a spray-on fabric guard may also be applied (in a cross-hatchet motion) and repeated as necessary.

STORAGE

While MAMAGREEN cushions and pillows are impressively water-repellent, it is best to store them inside when not in use for extended periods, airing occasionally.

NEVER

Bleach (diluted with water, at a ratio of 5:100) may also be added to soapy water for washing if required, but do not dry-clean, or undertake any cleaning that uses heavy chemicals. Do not wash with hot water (exceeding 30 degrees). Machine washing is not recommended, and do not dry in an electric clothes dryer.



COLOR OPTIONS

100% Sunbrella® solution-dyed acrylic, a dependable fabric, is the perfect choice for outdoor cushions. Yarns are finished with a water-repellent coating, reducing water absorbency. Extremely fade-resistant and easy to clean, Sunbrella® has sublime anti-tear and tensile strength specifications, facilitating intensive outdoor usage. Sunbrella® is a USA-based company, manufacturing performance outdoor textiles since the 1960s.

100% Sunbrella® solution dyed acrylic, a dependable fabric, is the perfect choice for outdoor cushions.

Yarns are finished with water repellent coating, reducing water absorbency.

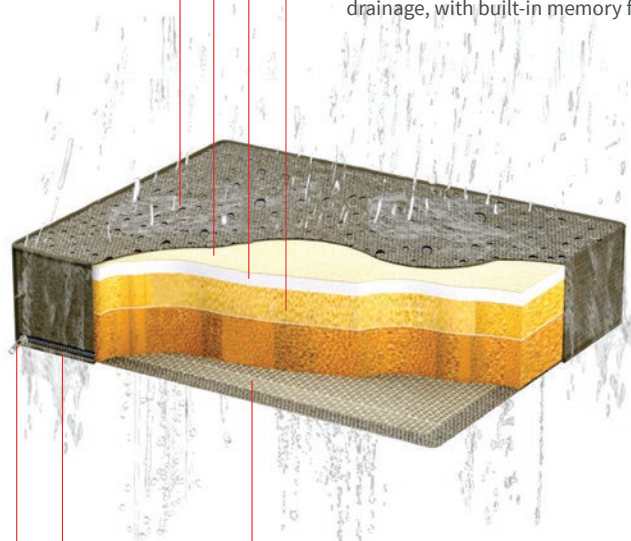
Extremely fade resistant and easy to clean, Sunbrella® has sublime anti-tear and tensile strength specifications, facilitating intensive outdoor usage.

Sunbrella® is a USA based company, manufacturing performance outdoor textiles since the 1960s.

Regular cushions : Polyester Tulle lining
AIKO Cushion : Water resistant polyester lining

All-weather polyester fiber for extra batting

QuickDryFoam® core, developed to facilitate automatic drainage, with built-in memory for shape



Polyester/PVC blend mesh layer for extra ventilation and drainage support

Water-repellent inner seam

Top quality YKK zipper. Easy cover removal for washing, or airing cushion core



100% Solution dyed acrylic

Water repellent & stain treatment

Quick Dry Foam core

Ultra UV-protection & color-proof

Extreme tensile strength

After rainfall, the cover will dry fast, however, the core needs some time to dry out completely, especially in a mild or cold climate, or after excessive rain. When not used ideally store the cushion in a vertical position with the drainage mesh at the bottom.

Regular cleaning, airing & thorough drying extends the lifetime.

Expected to last in a good condition for more than 5 years.



SUNBRELLA® – AIKO CUSHION

Made in the USA by Glen Raven

Application: performance outdoor fabric for cushions

100% solution-dyed acrylic with a soft flexible feel, 260 gr/m², UV resistant, anti-stain treatment, and water repellent. Sunbrella sailcloth textiles and some of the special ranges have an indoor feel, being heavier (400/580 gr/m²), are very sturdy but will require a longer drying time.

For the Aiko collection, we offer a memory outdoor foam core covered in a water-resistant barrier, therefore some water can remain trapped between the cover and the inner liner. Drying and airing separately extend the longevity of the cushions. Storing the cushions vertically with the mesh at the bottom side will improve air circulation.

The purpose of the ventilation holes at the side of the cushions is to avoid trapping air or “ballooning”.

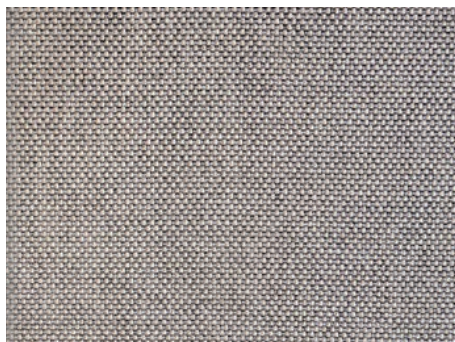
Tip: enjoy your lounge furniture instantly after a rain shower using protective covers, but remember to never cover wet cushions with a rain cover, especially for an extended period of time.

For cleaning:

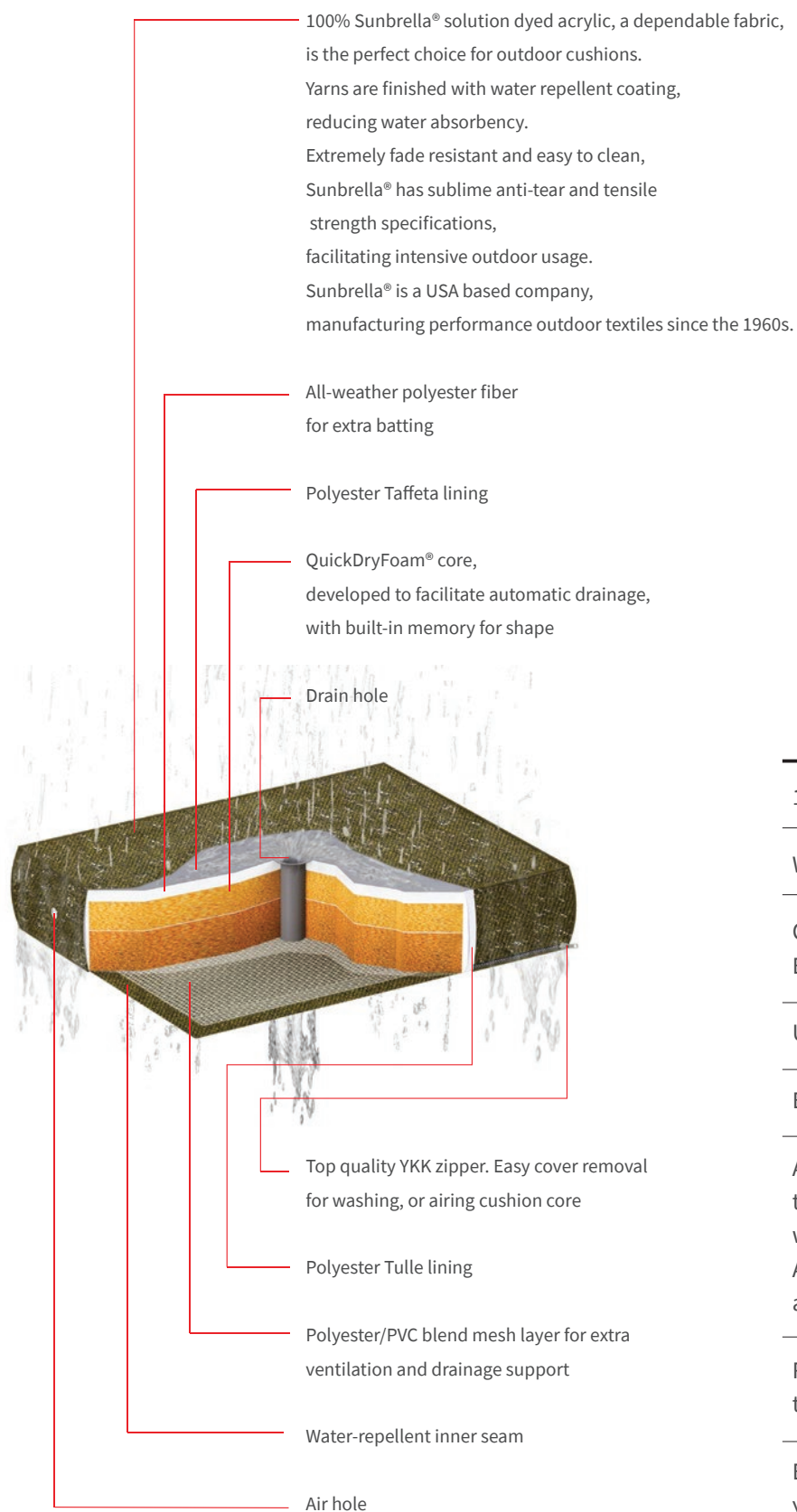
www.sunbrella.com/en-us/how-to-clean



Before Cleaning



After Cleaning



100% Solution dyed acrylic

Water repellent & stain treatment

Quick Dry Foam core covered with Water Resistant Barrier.

Ultra UV-protection & color-proof

Extreme tensile strength

After rainfall, this cushion can be reused as soon as the cover dries out, as only a small amount of water will penetrate the core.

After excessive rain, we advise taking off the cover and dry the cover and core separately.

Regular cleaning, airing & thorough drying extends the lifetime.

Expected to last in a good condition for more than 5 years.

AGORA®

Made in Spain by Tuvatextil S.L

100% Solution Dyed Acrylic
with a Waterproof Laminated Liner

AGORA CUSHION

Application: waterproof cushions

Agora is a rigid, semi-stiff solution-dyed acrylic, specially developed for outdoor lounge cushions. This fabric comes with a unique waterproof laminated back layer and has excellent anti-stain, oil-repellent, and mildew-resistant capacities.

The core is made of memory foam specially developed for outdoor use, with a fast-drying open cell structure. The purpose of the ventilation holes at the side of the cushions is to avoid trapping air or “ballooning”.

Extend the longevity of lounge furniture by using protective covers, and separately dry the cushion cover and cushion core separately, at least 2 times per year (or more often in case of frequent use).

Tip: place cushions vertically when not in use, or in case of a shower, to avoid puddles on the seat. When taking care of your furniture and upholstery, we recommend using a protective cover but remember to never cover it when it's wet or dirty, especially for an extended period of time.

We introduced the Agora cushion category in the Bondi, Ube, and Kyoto ranges.

For cleaning:

www.tuvatextil.com/workspace/uploads/pdf/cleaning-guide-agora-es-1560356709.pdf



Before Cleaning



After Cleaning

MAINTENANCE INSTRUCTIONS

Manufactured by Tuvatextil S.L. in Spain, specialists in 100% solution dyed acrylic, Agora fabric has an oil-and-water-repellent back layer, excellent anti-stain, mildew resistant, highly UV-resistant and color-proof capacities, as well as high tensile strength properties. The core of the Agora waterproof cushion is an open-cell structure foam by Inoac®

CARE

Clean stains with a cloth or sponge moistened with a neutral soap solution, always on the fabric side. In case of stubborn stains, a solution of <5% bleach may be used instead. Iron on the fabric side only. Do not iron on the laminated side and iron at low temperatures. Clean Agora fabrics with neutral soap in lukewarm water, recommend cleaning at a temperature of no more than 300 Celcius (800 Fahrenheit). Bleach (diluted with water, at a ratio of 5:100) may also be added to soapy water for washing if required.

MAINTENANCE

Manufactured to withstand the harsh conditions of the exterior, Agora fabric incorporates multiple qualities and treatments to cope with the most demanding environments guaranteeing excellent performance. For extra long-term durability, a sprayon fabric guard may also be applied (in a cross-hatchet motion) and repeated as necessary.

STORAGE

While MAMAGREEN cushions are impressively water-repellent, it is best to store inside when not in use for extended periods of time, airing occasionally.

NEVER

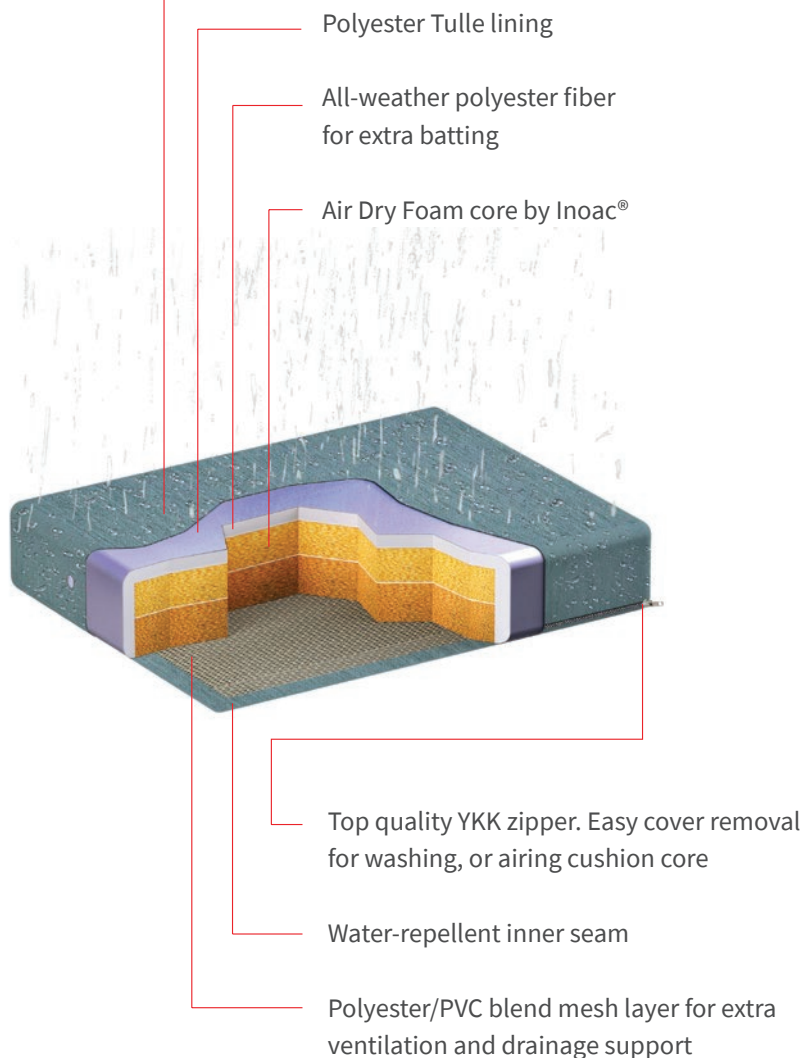
To clean and dry Agora fabric, please never do the following:

- Dry-clean
- Undertake any cleaning that uses heavy chemicals
- Use pressure washers (Karcher type), as it may damage the lamination and/or peel it off.
- Wash in hot water or a washing machine (delicate program) with water temperature of 30° degrees Celsius/80° degrees Fahrenheit.
- Dry in clothes dryer.

Never expose laminated side to UV rays or direct sunlight or any atmospheric



Manufactured by Tuvatextil SL in Spain, specialists in solution dyed acrylic, Agora fabric has a waterproof laminated liner and has excellent anti-stain, oil repellent and mildew resistant capacities. The core of the Agora waterproof cushion is an open cell structure foam by Inoac®



100% Solution dyed acrylic

Water repellent & stain treatment

Cover with Water Resistant Back & Quick Dry Foam core.

Highly UV-protection & color-proof

High tensile strength

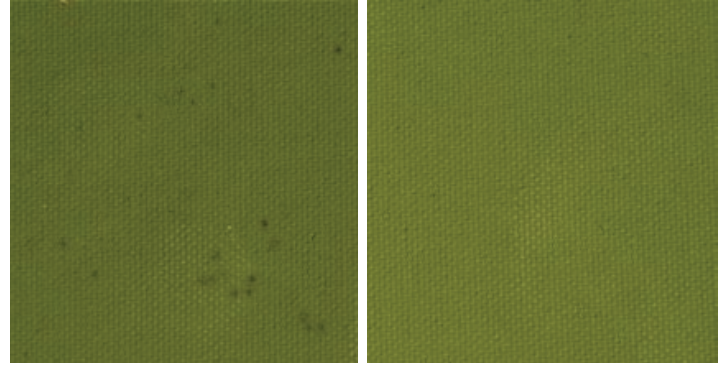
After rainfall, this cushion can be reused as soon as the cover dries out, as only a small amount of water will penetrate the core. After excessive rain, puddles may occur: we advise to take off the cover and dry them separately.

Regular cleaning, airing & thorough drying extends the lifetime.

Expected to last in a good condition for 3 - 5 years.



PILLOWS



Before Cleaning

After Cleaning

MAINTENANCE INSTRUCTIONS

MAMAGREEN pillows are easy design solutions, complimenting any of our collections beautifully. Olefin's advantages for outdoor use are strength, colorfastness, and comfort, plus resistance to staining, mildew, abrasion, and sunlight.

HANDLING

While Olefin is an excellent outdoor textile, MAMAGREEN Olefin cushions are not intended for all-weather use and should be kept as dry as possible.

CARE

Brush off dirt, then wash covers gently by hand in warm, soapy water, after removing the pillow or core. For more stubborn marks, use a household stain remover and a soft, synthetic brush. Rinse, and allow this super quick-drying fabric to dry naturally.

MAINTENANCE

Olefin is a performance outdoor textile that will maintain its "very comfortable hand feel". No specific maintenance is needed for this highly versatile fabric. Keep dry, but if wet, remove the cushion insert and dry both the insert and cover separately.

STORAGE

When not in use, it is best to store either inside or in a watertight container, airing occasionally.

NEVER

Do not dry-clean, or undertake any cleaning that uses heavy chemicals. Do not wash with hot water (exceeding 30° Celcius or 80° Fahrenheit). Machine washing is not recommended, and do not dry in a clothes dryer.

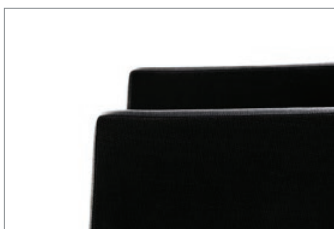
OLEFIN PADS & PILLOWS

Made in Indonesia by Sunproof
(Ateja Group)

Application: decorative throw pillows,
seat and backrest pads

Tip: store pillows and pads in an airy place when not in use

For cleaning:
www.sunproof.co.id/how-to/care-instructions



LEISURETEX UPHOLSTERY

Made in the USA by Twitchell Corp

Application: upholstered frames and webbing for back supports

Ideal for heavy-duty upholstered chairs and lounge frames, these textiles are made of stiff PVC-coated polyester mixed with polyolefin, and a water-repellent back layer. Tear strength and tensile capacities are very high, making it suitable for upholstery in any outdoor environment.

Furniture made from Leisuretex will last many years, though a minimal deterioration of the olefin fibers may occur over time.

Tip: tilt chairs against tables to avoid a puddle and a wet seat

For cleaning: use a water / liquid soap mix and a soft scrubber, tough stains can be cleaned with a brush and diluted bleach (one cup of household bleach in three gallons of water, use a brush, do not soak). Avoid abrasive cleaners. Always rinse and air-dry after cleaning

Ideal for heavy duty upholstered chairs and lounge frames, these textiles are made of stiff PVC coated polyester mixed with polyolefin.

Textilene is a durable, versatile fabric. Tear strength and tensile capacities are very high, making it suitable for upholstery in any outdoor environment. Not affecting the quality of the textile, striped yarn colors may weather slightly over extended periods of time.

The Leisuretex closely woven yarn, with a water-repellent back layer, increases the outstanding all-weather benefits of this robust, durable technical textile.

Furniture made from Twitchell fabrics will last many years, though a minimal deterioration of the olefin fibers may occur over time. This synthetic textile is easy to clean with a water / liquid soap mix and a soft scrubber.



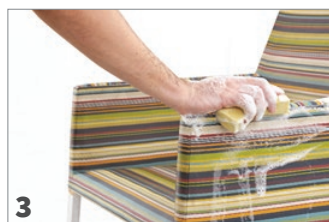
TEXTILENE MESH

Made in the USA by Twitchell Corp

Application: upholstered frames and sling furniture

This durable, versatile textile is made of PVC coated polyester, with high tear strength and tensile capacities, making it suitable for various outdoor mesh applications. Not affecting the quality of the textile, striped yarn colors may weather slightly over extended periods of time.

For cleaning: use a water / liquid soap mix and a soft scrubber, tough stains can be cleaned with a brush and diluted bleach (one-cup household bleach in three gallons of water). Avoid abrasive cleaners. Always rinse and air-dry after cleaning.



MAMAGREEN slings are either Batyline or Twitchell, both international industry leaders in outdoor textile technology. Their slings are extremely durable and developed to withstand prolonged exposure to the elements, including marine environments. Strong, coated polyester also means these fabrics have outstanding 'bounce back' qualities that will not be adversely affected by repeated (normal) use.

HANDLING

Our slings are flame, stretch and tear resistant. However, care should be taken to avoid direct contact with sharp objects. Stack chairs carefully, making sure not to pierce sling. Overloading the sling surface will eventually impact the durability of the textile.

CARE

If cleaning is required, do not remove slings from frames. Just wash directly, with a mild household soap and lukewarm water, allowing the soapy water to seep in. Then clean gently with a soft synthetic brush. Rinse; this textile is quick drying and will be ready to use again in a few minutes.

MAINTENANCE

These high-tenacity polyester yarns require no specific maintenance. Re-defining 'easy care', brushing off the dirt, then hosing down monthly should ensure they only require washing occasionally.

STORAGE

While not essential, It is always best to store furniture indoors or under cover if not in use for long periods of time, or if weather or environmental conditions are unusually harsh.

NEVER

Do not use acidic, alcohol-based, or solvent-based cleaners. We recommend using any ordinary household soap, or diluted dishwashing detergent. Do not use steel bristle brushes or highly abrasive cleaning aids.



STAMSKIN UPHOLSTERY

Made in France by Serge Ferrari

Application: leather look upholstery

This watertight faux-leather fabric offers excellent resistance over time. Versatile and durable, this soft feeling marine grade artificial leather offers high UV protection and anti-soil, fungal and microbial treatment.

Tip: white upholstered furniture requires very regular cleaning

For cleaning:

<https://www.youtube.com/watch?v=WEge8fyYRqQ&feature=youtu.be>



HANDLING

This Swiss-made composite fabric is suitable for heavy use, with the high-quality finish ensuring the fabric is flexible and not easily damaged. However, it is important to avoid contact with ink pens, markers, dark clothing (including denim), or any other item that has the potential to cause permanent stains.

CARE

STAMSKIN® faux leather is marine-lifestyle compatible, complete with anti-soil, fungal and microbial treatments. To clean, simply spray with Serge Ferrari '500 Cleaner' (or a similar, pH neutral textile detergent, or soapy water) and leave for several minutes. Wipe with a microfiber (or lint-free) cloth in a circular motion (not back and forth). Leave for a minute, and repeat if necessary. Remove any remaining residue with a dry cloth, then wipe dry. For spills, rub gently to remove then clean as above.

MAINTENANCE

We suggest brushing off any dirt regularly, as long-term marks can be more difficult to remove. For the same reason, we recommend that any spills are dealt with as soon as possible.

STORAGE

While it is best to store furniture indoors or under cover if not in use, we recommend using a protective cover for furniture when left outside continuously, airing occasionally.

NEVER

There is no need to remove cushion cores if they have Stamskin covers, just clean as above. Do not dry-clean, or undertake any cleaning that uses heavy or oil-based chemicals.



ROPE AND BRAID (OLEFIN)

Made in Indonesia by Ateja

Application: outdoor rope, braiding

Made of olefin textile, furniture made with olefin rope or braiding. Can remain outside in any climate. This material is highly colorfast, and mildew resistant with great tensile strength.

For cleaning: use a soft brush, cloth, and mild detergent.

ROPE

MAMAGREEN's rope is made of olefin, an Oeko-Tex-certified synthetic fabric, and has high weather ability and anti-mildew capacities. Colors can weather slightly yet remain vibrant for an extended period of time. Ideal to clean stains and spills as soon as possible with a dry cloth. Regular cleaning with soapy lukewarm water will extend the beautiful appearance of the furniture pieces.





PROTECTIVE COVERS

PREMIUM winter-ready covers

Enabling your indoor lifestyle; to move outside

Please see the following page.

MAMAGREEN protective covers are made from Surlast, a 100% solution-dyed polyester, with a urethane coating, made in the USA. Proper care and cleaning are important for all fabrics, even Surlast material which is designed for easy maintenance.

SURLAST CARE & CLEANING

For normal cleaning, mix a mild soap or dishwashing liquid with lukewarm water, and clean the fabric with a soft bristle brush. Then, rinse thoroughly with cold water and air dry. Avoid using a harsh detergent.

For stubborn stain, apply a mixture of diluted bleach and water. Add a maximum of 1 cup of bleach to 1 gallon of water. Lightly spray the fabric face (non-coated side) then rinse immediately on the fabric for more than 2 minutes. Air-dry only. Do not soak the fabric. Prolonged exposure to harsh chemicals can damage the coating.

Note: Using harsh cleaners such as bleach will require retreatment like 303 Fabric Guard to restore water-repellent quality.



1. Front View



2. Top View



3. Buckle Position



*** When used for extended periods of time, ensure that the furniture is dry and clean before using the protective cover, and always air the furniture regularly.*

Some important points to consider:

- Check the label to ensure the correct cover
- Avoid covering wet furniture, rather dry it in an airy environment before covering.
- Never cover partially wet or humid furniture for long periods of time (never longer than 24 hours). Note that the core of outdoor cushions may be wet, while the cover is dry!
- Furniture must be in a very clean state and completely dry before covering for an extended period of time to avoid mold and mildew.
- Make sure that food residue, sauce stains or other organic materials are removed from table tops, before covering.
- Always fix the covers securely to keep the wind from blowing the covers away, use extra weights if considered necessary.
- When covering the furniture make sure that the non-coated face of the fabric is exposed to the sun.
- In case cushions feel moldy or musty after being covered for some time, remove cushion covers, air it, and clean the cover and core separately.
- When wood remains covered in a humid environment for more than 24 hours, slightly sanding, or brushing with a hard brush, will remove most mold or mildew caused by organic material left on its surface.
- Ensure proper air circulation under the cover, avoiding condensation, which may cause mildew or mold. Use spacers (a foam brick might work) to lift the cover from surfaces if considered necessary
- Storing wet or dirty protective covers may cause damage to the cover, mildew, or a bad smell; always dry in an airy environment
- In case covers are damaged, replacement covers are available and made to order.

All weather solutions are effective for precipitation rates of up to 15 mm/hour.

- Heavy duty 235 gr/m² - 7 oz/yd².
- A special water-repelling inside cover for sewing seams.
- High frost, water, mold, and mildew resistance.
- Suitable for use with all MAMAGREEN textiles/materials.

WARRANTY

MAMAGREEN furniture pieces are designed, developed, and manufactured for residential, commercial, or hospitality outdoor spaces.

Manufacturing is done by skilled craftspeople in MAMAGREEN's own facilities. All items are carefully checked during each production process, using strict quality control standards, and inspected and securely packed by MAMAGREEN.

Part 1. Damage upon delivery

MAMAGREEN advises buyers to always inspect all boxes and all products upon delivery.

- If packaging and boxes show any sign of damage, please inspect them immediately upon delivery, and prepare a proof of damage acknowledgment from the freight company. Note that in some cases furniture can be damaged, due to handling or transport, without showing any damage to the packaging.
- If products show any sign of damage upon delivery, due to freight, handling, transport, transit, or delivery, or if a manufacturing defect is suspected, it should be reported by the original buyer immediately (within five (5) days of receipt of goods), to MAMAGREEN, in writing, and fully documented, including damage acknowledgment from the freight company, photography, description of damage, production code and other relevant information.
- All deliveries are shipped at the purchaser's risk, unless specifically otherwise agreed upon in writing. Certain products can be shipped by courier; other products, however, require blanket-wrapped, specialized transport. MAMAGREEN recommends specific transport companies, but the agreement between the buyer and the transport company, including any relevant insurance, is the responsibility of the buyer.
- In case damage was caused during unpacking, transport, transit, freight, or delivery, MAMAGREEN will look for a relevant solution, together with the buyer and the transport company, taking into consideration relevant insurance

Note that damage caused by third parties never absolves the buyer to settle any outstanding amounts.

In case the damage was caused by a manufacturing defect: see beside.

Part 2. Damage due to manufacturing defects

MAMAGREEN warrants that its products are packed and shipped in good condition, and are free from manufacturing defects and defects in workmanship and materials for a specific period of time.

MAMAGREEN furniture is partially handcrafted from natural, reclaimed, and industrial materials; random imperfections, minor differences in weight or dimensions, texture, and color differences as well as weathering due to exposure to the elements, are considered normal and are excluded from the limited warranty.

In case MAMAGREEN products are well maintained and used correctly, they will give pleasure for many seasons. In the unlikely event that something goes wrong we will do our best to make things right. Limitations to the warranty, besides normal wear and tear, can be found in Part 3.

METAL FRAMES

- Domestic use - Warranted for FIVE years, starting from the date of delivery.
- Contract use - Warranted for THREE years, starting from the date of delivery.

Structural damage, caused by a manufacturing defect, that prevents its intended use

This excludes normal wear and tear, such as but not limited to superficial changes, discolorations, abrasive wear, scratches and minor peeling of powder-coated surfaces, and tea staining on stainless steel frames. Limitations as described below, apply.

TEAK / HPL

- Domestic use - Warranted for THREE years, starting from the date of delivery.
- Contract use - Warranted for TWO years, starting from the date of delivery.

Structural damage, caused by a manufacturing defect, that prevents its intended use

This excludes normal wear and tear, such as but not limited to weathering, color and texture changes, minor cupping, minor cracks or bending as well as random imperfections in natural materials and reclaimed teak (examples: knotholes, branch marks, hairline cracks, nail or bolt holes, construction marks and stains caused by wood-sap). Limitations as described below, apply.

TEXTILES, WICKER, ROPE, HARDWARE

- Domestic use - Warranted for ONE year, starting from the date of delivery.
- Contract use - Warranted for ONE year, starting from the date of delivery.

All textiles*, slings*, cushions*, upholstery, foams, excluding wear and tear.

Wheels*, gliders*, extension and swivel mechanisms, and hardware*, excluding wear and tear

This excludes normal wear and tear. Limitations as described below, apply.

**note that replacement parts, cushions, and cushion covers are available for purchase*

Part 3. Limitations & Specifications

Used as intended, maintained correctly, and well protected in extreme circumstances, MAMAGREEN furniture can be enjoyed for many years.

Specific functions or characteristics can be part of the item



ADA compliant / wheelchair accessible



Heavier than regular items, suitable for more windy areas



Suitable for residential use, may contain fragile parts



Suitable for the marine environment



Can be floor bolted on request for public use



Contains recycled parts, and random imperfections are part of the design



Partially handcrafted, random imperfections are part of the design

Limitations due to non-intended reasonable use

Our warranty is developed for the intended reasonable use, and any damage which occurs from the following causes is excluded from this limited warranty: smoking, sharp objects, misuse, abuse, renting or borrowing, alterations, accidents, placement of excessively hot items on the surface of the product, used by people who weigh above 150kg/300lbs, damage by pets or wild animals, sitting on backrests or armrests, sitting on wet seats, use for transport or any other use beyond the intended reasonable use of the furniture.

Limitations due to care and storage issues

Any damage due to improper storage, improper use of protective covers, incorrect maintenance, the application of improper finishes or care products, insufficient routine cleaning, non-replacement of worn glides, or lack of lubrication of mechanical parts will be excluded from the limited warranty. Maintenance is the sole responsibility of the owner/user and is required to keep the warranty in effect.

Limitations due to extreme conditions

Any damages which occur from the following causes are excluded from this limited warranty: natural disasters, extreme weather conditions, extremely high winds, floods, fires, earthquakes, accidents, war, violence, terrorism, or any other extreme condition.

Limitations for “Outlet” furniture pieces

Furniture from our outlet is sold “as is”, meaning that it might have been used for photography, display, or showroom purposes, and might show certain signs of use, and our limited warranty doesn’t apply.

Part 4. Claim procedure

Written documentation is required prior to any judgment regarding defective products, including:

- Copy of the invoice/proof of purchase
- Photography of the relevant furniture, clearly illustrating the defect
- Description of the product, code, and manufacture date
- Description of the defect
- Description of the time and circumstances when the defect was discovered
- Description of the packaging, clearly showing if the box was closed or opened upon delivery

Claims should be submitted either to the original place of purchase or fully documented to info@mamagreen.com.

In the case that the damage is caused by a manufacturing defect, and within the limitations of the warranty, MAMAGREEN will, at its discretion: replace or repair the damaged product or parts or offer a credit to replace or purchase new products.

Shipping of replacements or replacement part is subject to a lead time of twelve to fourteen (12 – 14) weeks. Expedited or substituted replacement parts are subject to express charges. If the product is no longer sold by MAMAGREEN, MAMAGREEN has the right to provide an appropriate replacement, as determined by MAMAGREEN.

Part 5. Maximum liability

Maximum liability is the purchase price of the failed product in the form of a credit to replace or purchase a new product.

MAMAGREEN will not be liable for any consequential, economic, or incidental damages or delays resulting from a product defect. In all cases, the warranty claimant will be solely responsible for all transport or freight costs resulting from the warranty claim.

MAMAGREEN will not cover any damage or injuries to third parties, such as: but not limited to injuries to people or animals, damage to clothes, floors, walls, furnishing, and any other consequential damages.

Implied warranties don't apply.

