

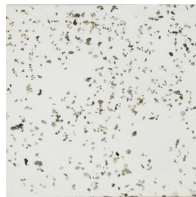


**YARDART**

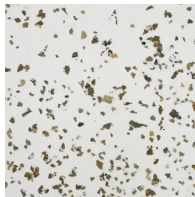
995 Governor Dr. #103  
El Dorado Hills, CA 95762

866 382-8600

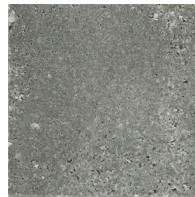
info@yardart.com



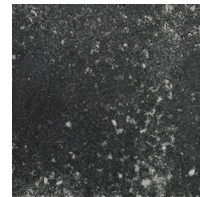
WHITE STONE



NATURAL STONE



KEY STONE



COAL STONE



AGED STONE

## TERRACE PLANTER

Whether dividing a room or watching from the perimeter, our Terrace planter is a grounded home for all plant life. Cast hollow with fiberglass support, drainage and maintenance are simple despite its genuine stone finish. Our Stone palettes act as beautiful complements to the natural colors of your garden.

Fiberglass resin and aggregate.

ZBTP3 | 68"W x 20"D x 18"H - 40 lbs

ZBTP4 | 48"W x 18"D x 24"H - 45 lbs

