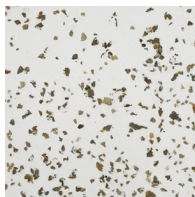
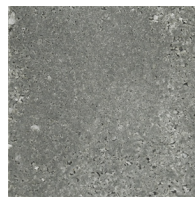


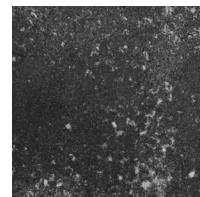
WHITE STONE



NATURAL STONE



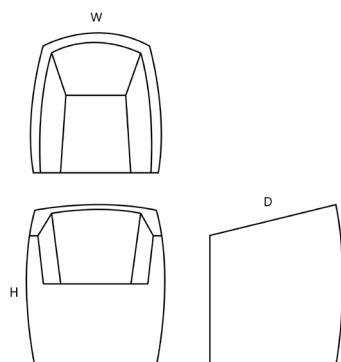
KEY STONE



COAL STONE



AGED STONE



## VAN DYKE CHAIR

An appearance as solid as granite, sculpted with slight curves for comfortable support. One of our earliest designs, its essence of honed stone set the standard for successive pieces.

Fiberglass resin and aggregate.

ZBT100 | 28"W x 30.5"D x 33"H - 50 lbs. Seat Height: 17"